



Wellstrøm

First Field Trial Of A Next-Generation Fully Controllable Alloy Wellbore Sealing Technology

6/18/2026 Gary McWilliam

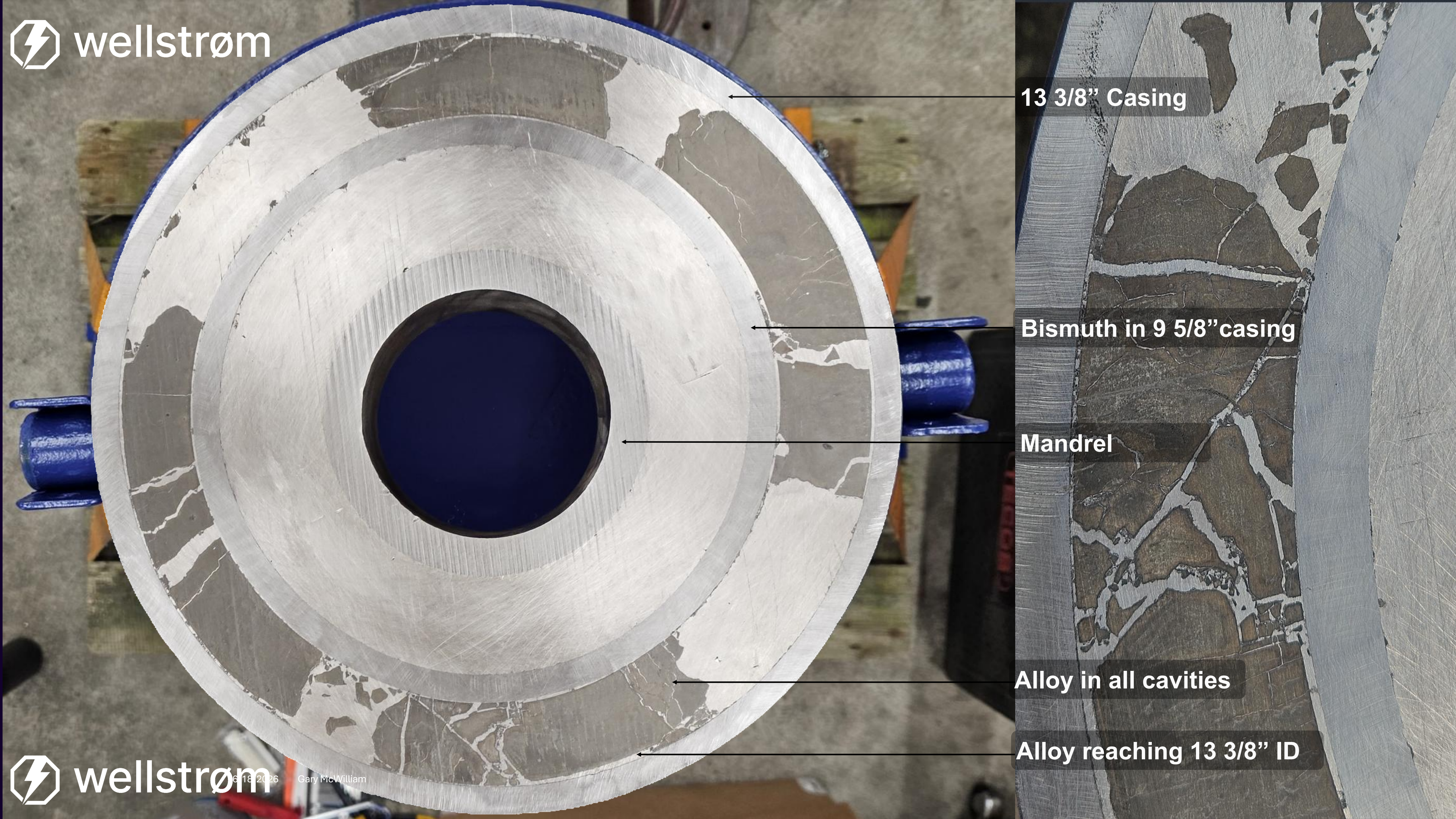


ShattArctid, at eol keater from surface

Perfo Great, epois cheth waletakingl atfsing

Nfbdveim g igas lattheipstela ovsiveleffting

Applied surface pressure ensures squeeze



13 3/8" Casing

Bismuth in 9 5/8" casing

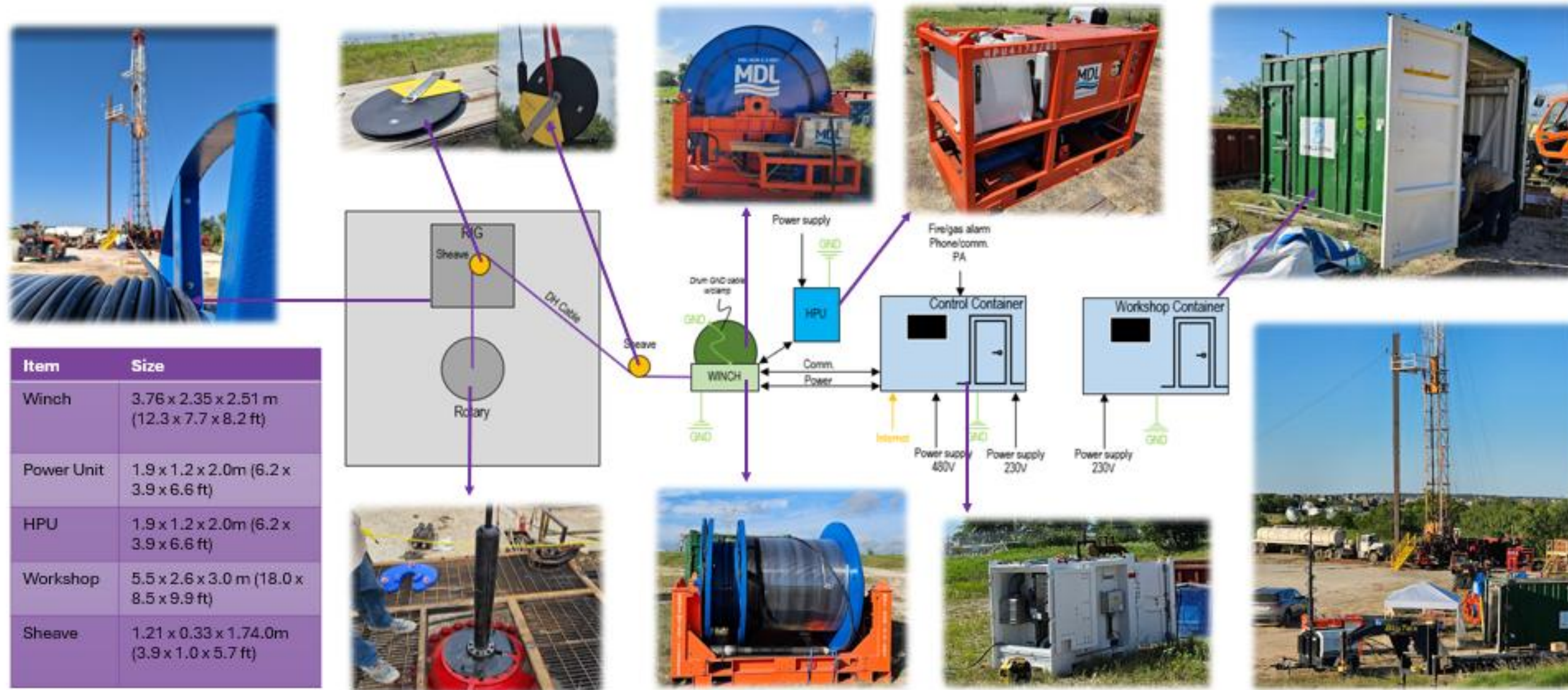
Mandrel

Alloy in all cavities

Alloy reaching 13 3/8" ID

2 x Field Pilot Overview

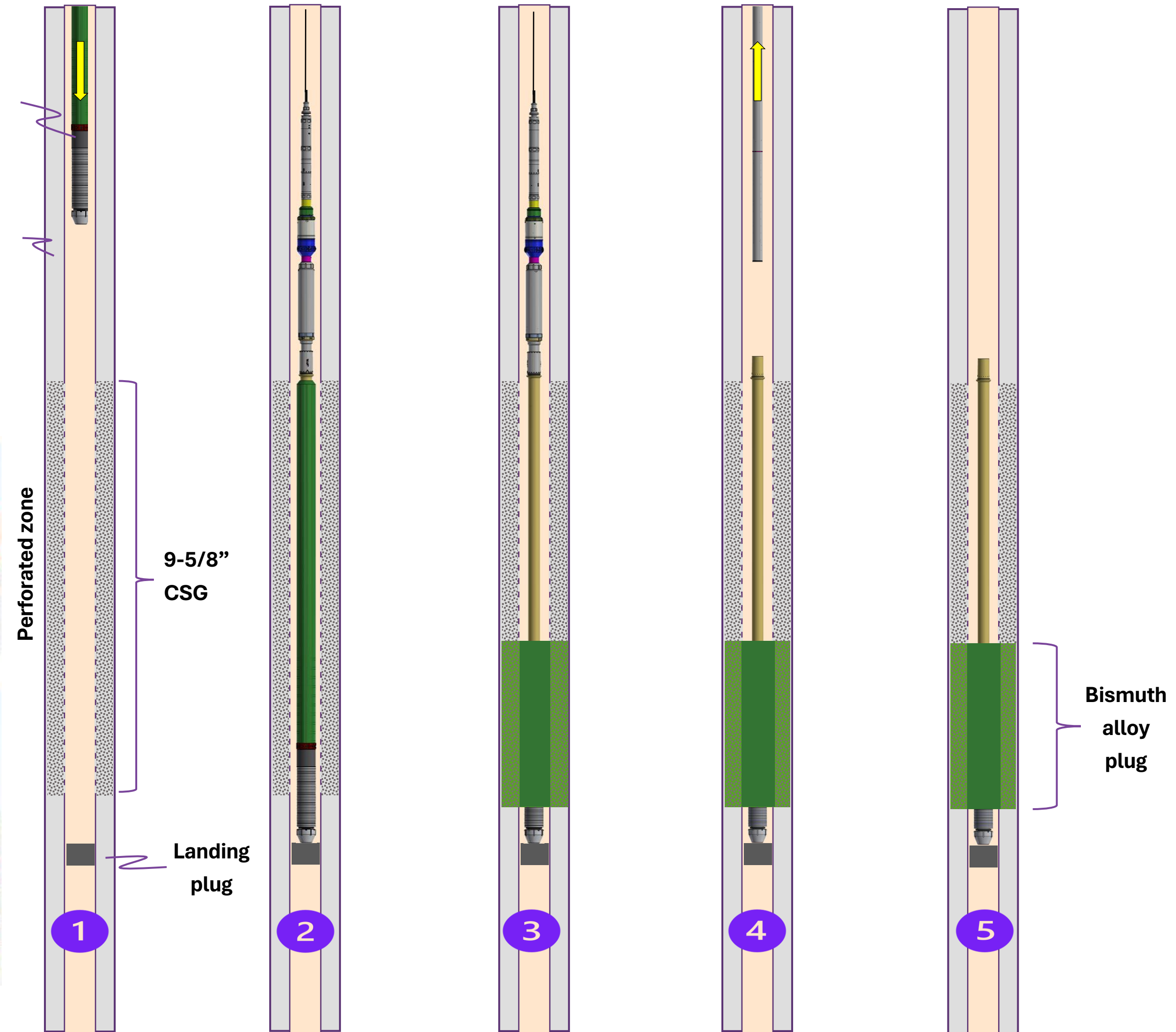
- Step 1: RIH with T-1000
- Step 2: T-1000 tool land (tag) on dedicated landing plug
- Step 3: T-1000 tool plug installation by heating operation, incl pressure tests.
- Step 4: POOH with T-1000 tool
- Step 5: Plug completed with Mandrel permanently installed as part of plug



Item	Size
Winch	3.76 x 2.35 x 2.51 m (12.3 x 7.7 x 8.2 ft)
Power Unit	1.9 x 1.2 x 2.0m (6.2 x 3.9 x 6.6 ft)
HPU	1.9 x 1.2 x 2.0m (6.2 x 3.9 x 6.6 ft)
Workshop	5.5 x 2.6 x 3.0 m (18.0 x 8.5 x 9.9 ft)
Sheave	1.21 x 0.33 x 1.74.0m (3.9 x 1.0 x 5.7 ft)

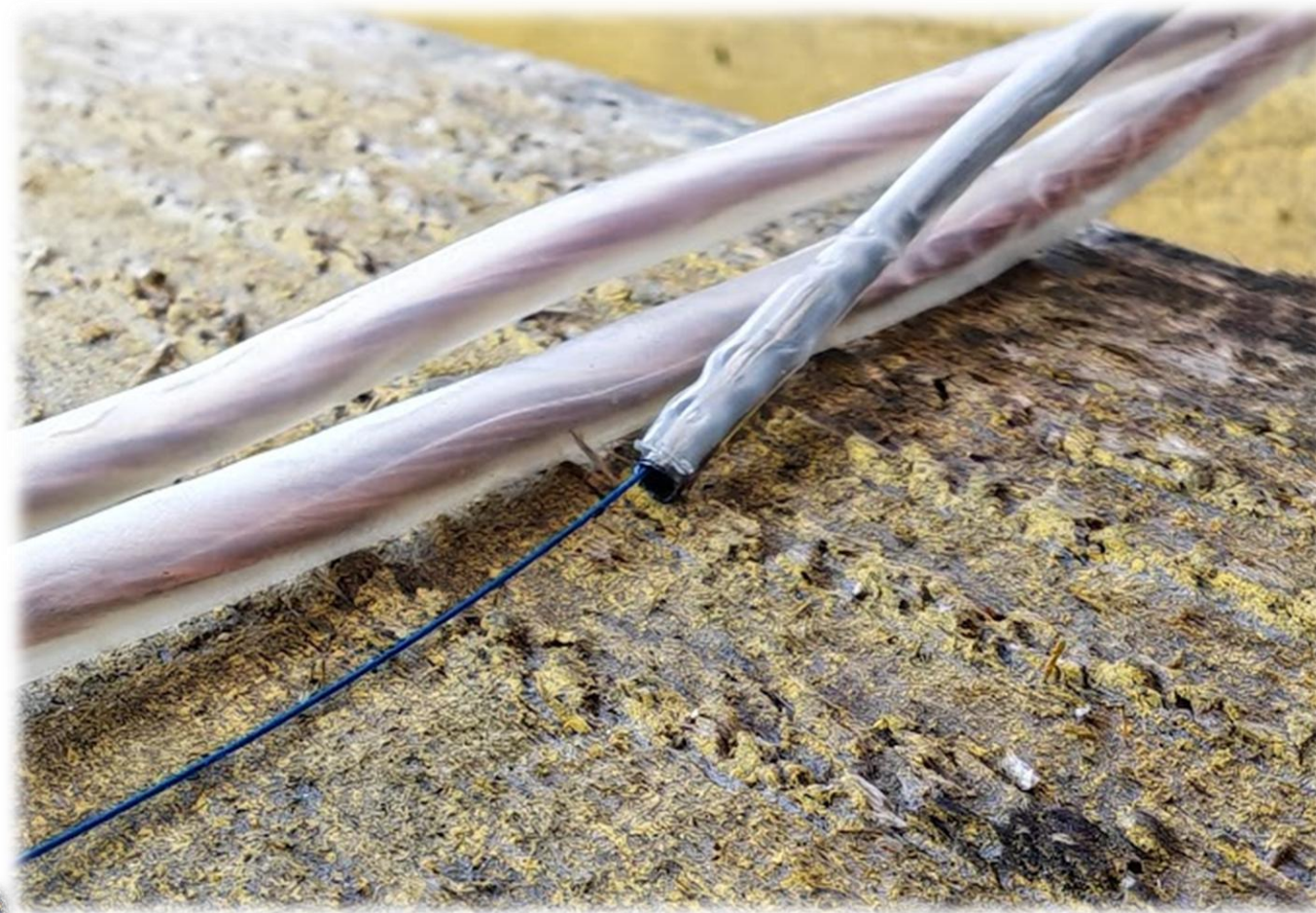
T-1000 tool

13-3/8" casing



Bismuth alloy plug

Lesson Learned



Roadmap / portfolio slide

T-1000 -trial and full-scale test **January 2023**

- ✓ Set plug in 1.28 SG WBM drilling fluid
- ✓ While flowing 1 liter/min gas
- ✓ Provided a high differential pressured seal @ 3000Psi gas and 3000 psi fluid.



Field trial for TotalEnergies set to **September 2023 (barrier plug)**

- ✓ Unfortunately, postponed due to normal oilfield operations challenges.



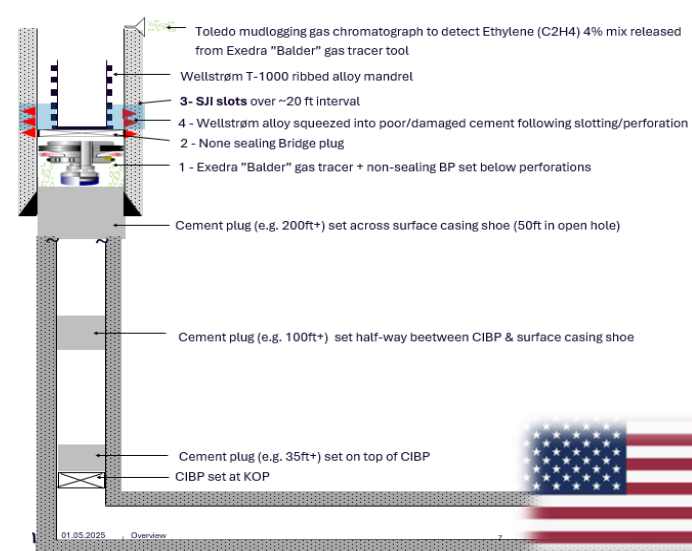
Field trial opportunity for a North Sea operator, **June 2024 (surface plug)**

- ✓ Rigged up test vessel last week and verified application, setting a Bismuth plug thru Gator holes into empty annulus.
- ✓ Due to winch failure the plug was unable to be deployed.



New field trial opportunity for USA operator, **July 2025 (surface plug)**

- ✓ 2 x wells.
- ✓ 1 x de-risked well
- ✓ 1 x fully plugged well (slotted casing and placing bismuth laterally across well)
- Expro DTS/DAS, SJI



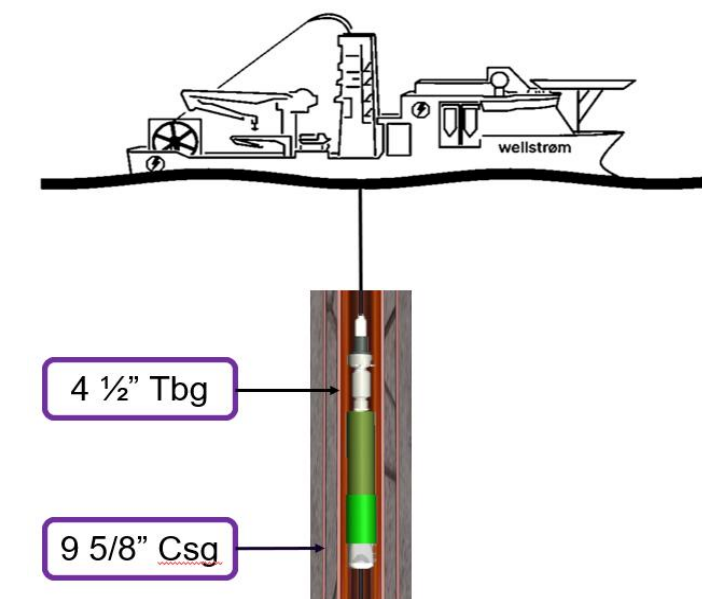
WHAT NEXT?

- Primary and Back-up equipment ready to go in our workshop
- ✓ 9 5/8" x 13 3/8" SCP remediation 1500m dept.
- ✓ Optimal well temperature 15-90°C for prepared Bismuth. Can be changed if required



WHAT NEXT?

- Secure commercial operations for the **T-1000**
- Execution of Qualification Plan with Astrimar and verification by DNV
- **T-3000** – 4 1/2" (5 1/2") x 9 5/8" casing plug – Q3 2026 – Require Pilot
- **T-3000** – Demonstration pilot confirmed Q4 2026





Thank you