



# Sumitomo Corporation: Meeting Energy Transition targets

Andy Howard

Director, Energy Transition (SEEL)

**Nippon Engineering Company**  
*Establishment of trading business*

1945

**Sumitomo Corporation**

1978

**Sumitomo Corporation**



**Founding of Sumitomo Corporation as  
Osaka North Harbour Company Ltd**



1919



**Besshi Copper Mine Restoration**

1876

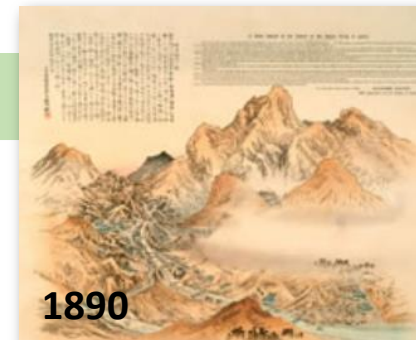


**Masatomo Sumitomo (1585 - 1652)**



**Besshi Copper Mine**

1691



1890








**Sumitomo Corporation**





# Sumitomo Corporation





 Metal Products Business Unit





 Transportation & Construction Systems Business Unit





 Infrastructure Business Unit





 Media & Digital Business Unit




 Living Related & Real Estate Business Unit

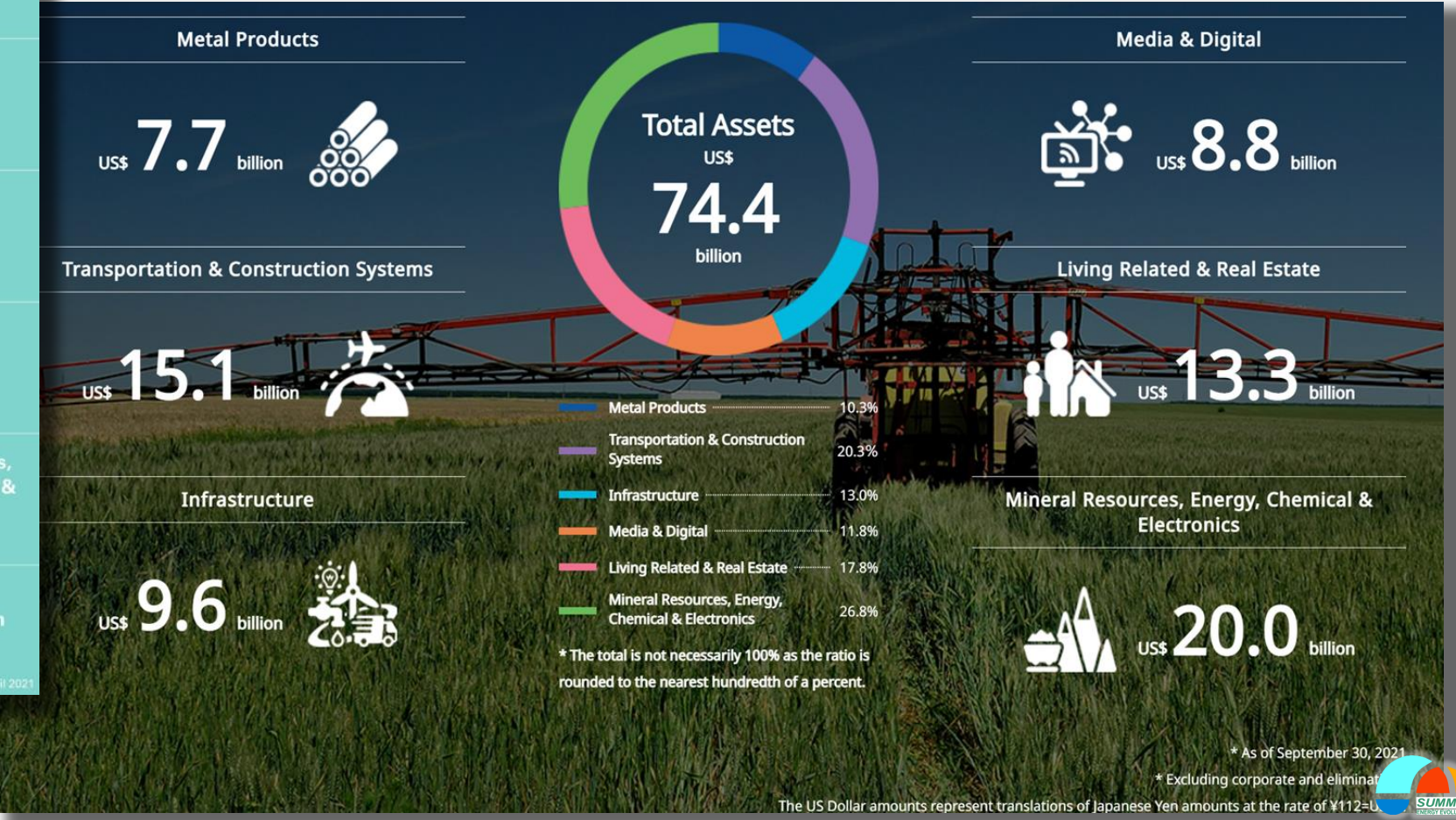


 Mineral Resources, Energy, Chemical & Electronics Business Unit



 Energy Innovation Initiative

Established in April 2021



\* As of September 30, 2021

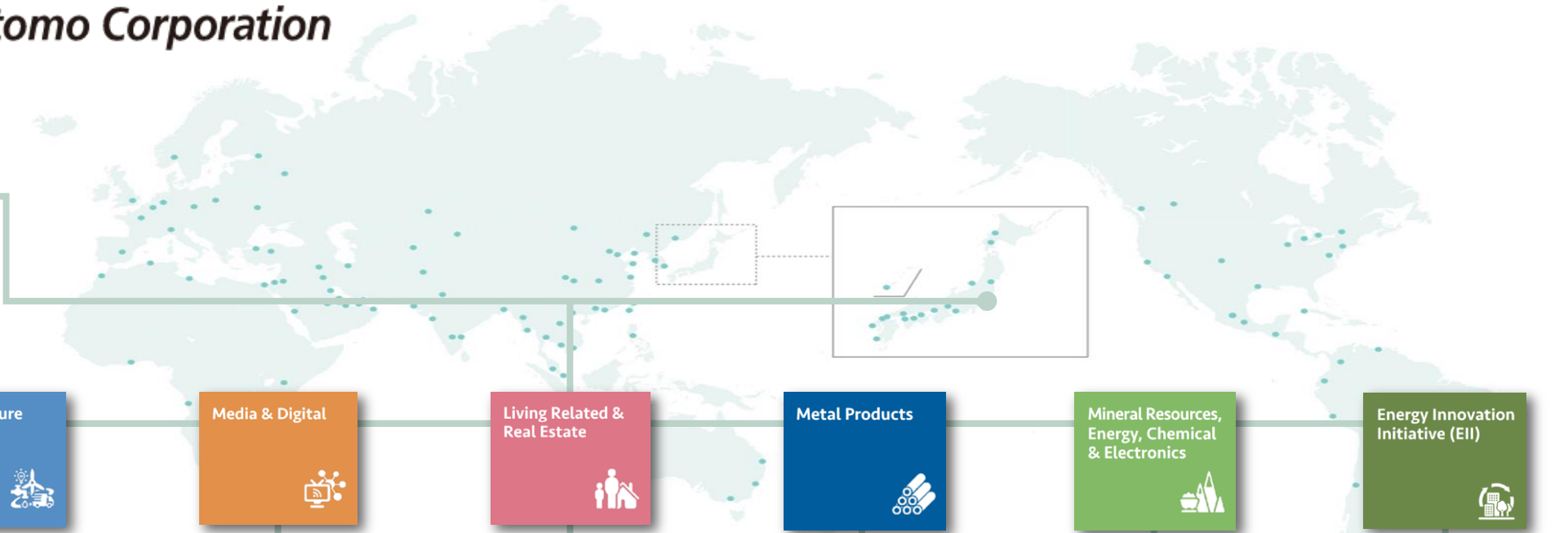
\* Excluding corporate and eliminat

The US Dollar amounts represent translations of Japanese Yen amounts at the rate of ¥112=US\$1





# Sumitomo Corporation



Transportation & Construction Systems

Infrastructure

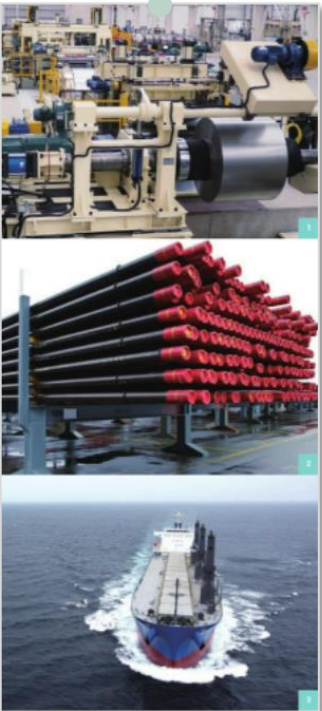
Media & Digital

Living Related & Real Estate

Metal Products

Mineral Resources, Energy, Chemical & Electronics

Energy Innovation Initiative (EII)



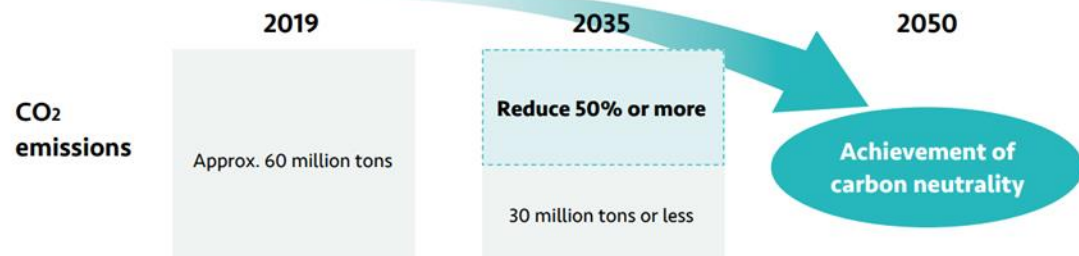
### Long-term goals

Aim for carbon neutrality by 2050 and challenge to realize sustainable energy cycle

### Medium-term goals

- Reduce the Group's CO<sub>2</sub> emissions 50% or more by 2035 (compared to 2019)
- Establish businesses that will form the foundation for a sustainable energy cycle in society

### Sumitomo Corporation Group targets for reducing CO<sub>2</sub> emissions



### Scope 1

Direct emissions

### Scope 2

Indirect emissions from acquired electricity, etc.

### Scope 3

Other indirect emissions

Sumitomo Corporation/  
Subsidiaries

Approx. 1 million tons

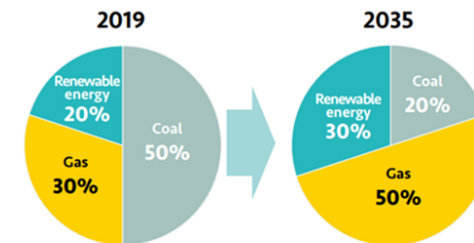
Associated companies  
(equity method)

Power generation business  
(Including facilities under construction)  
**Approx. 43 million tons**

Fossil fuel upstream business

**Approx. 16 million tons**

### Power generation portfolio (percentages of coal, gas, and renewable energy)



## CO<sub>2</sub> Emissions

(Thousand t-CO<sub>2</sub>e)

Index	Result of 2019 (The base year)	Result of 2020	Percentage of change	Reduction targets of 2035
Entirety	59,939	55,367	▲ 7.6%	50% or more
Power generation business (*1)	43,126	40,581	▲ 5.9%	40% or more
Of which, coal-fired power generation (*1)	34,452	32,337	▲ 6.1%	60% or more
Fossil energy concession	15,808	13,811	▲ 12.6%	90% or more

From Sumitomo Corporation Integrated Report 2021

Sumitomo Corporation | Enriching lives and the world

Integrated Report 2021

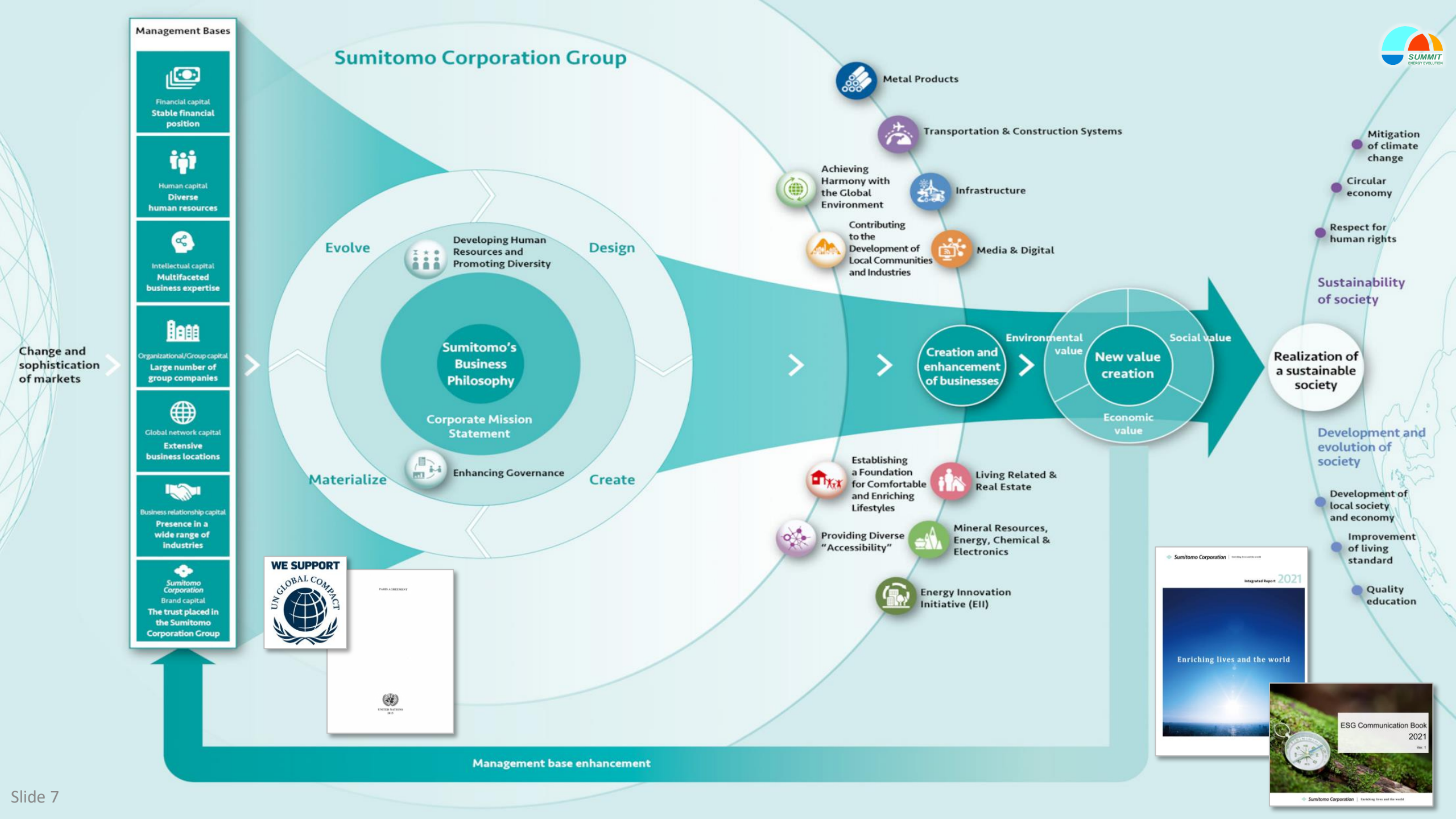
Enriching lives and the world

ESG Communication Book  
2021  
Ver. 1

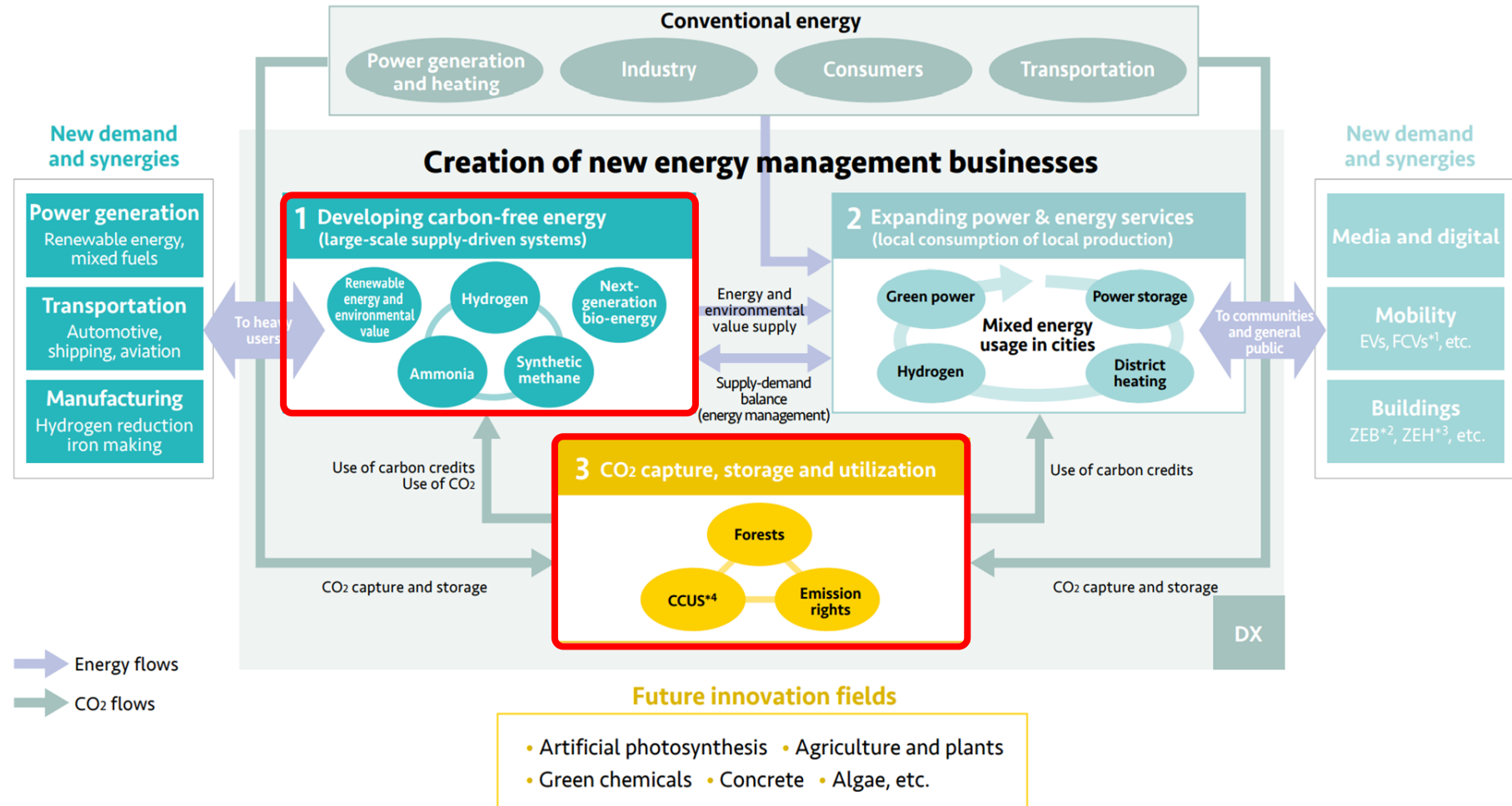
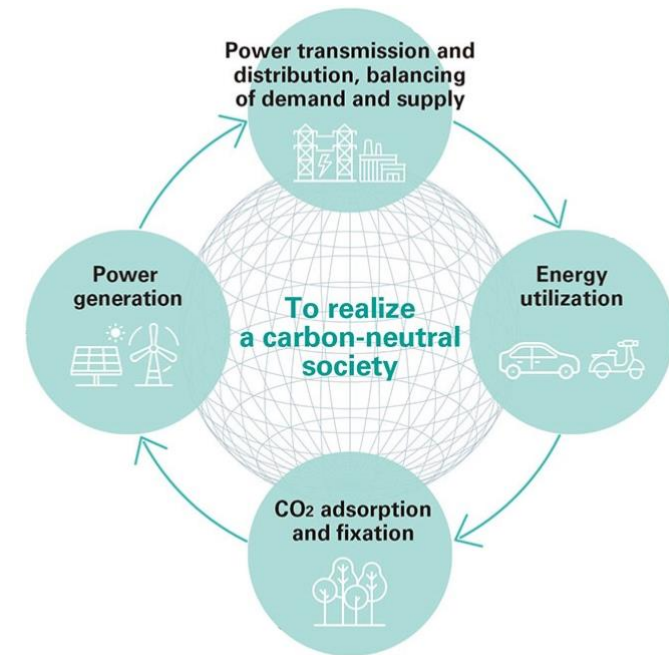
Sumitomo Corporation | Enriching lives and the world



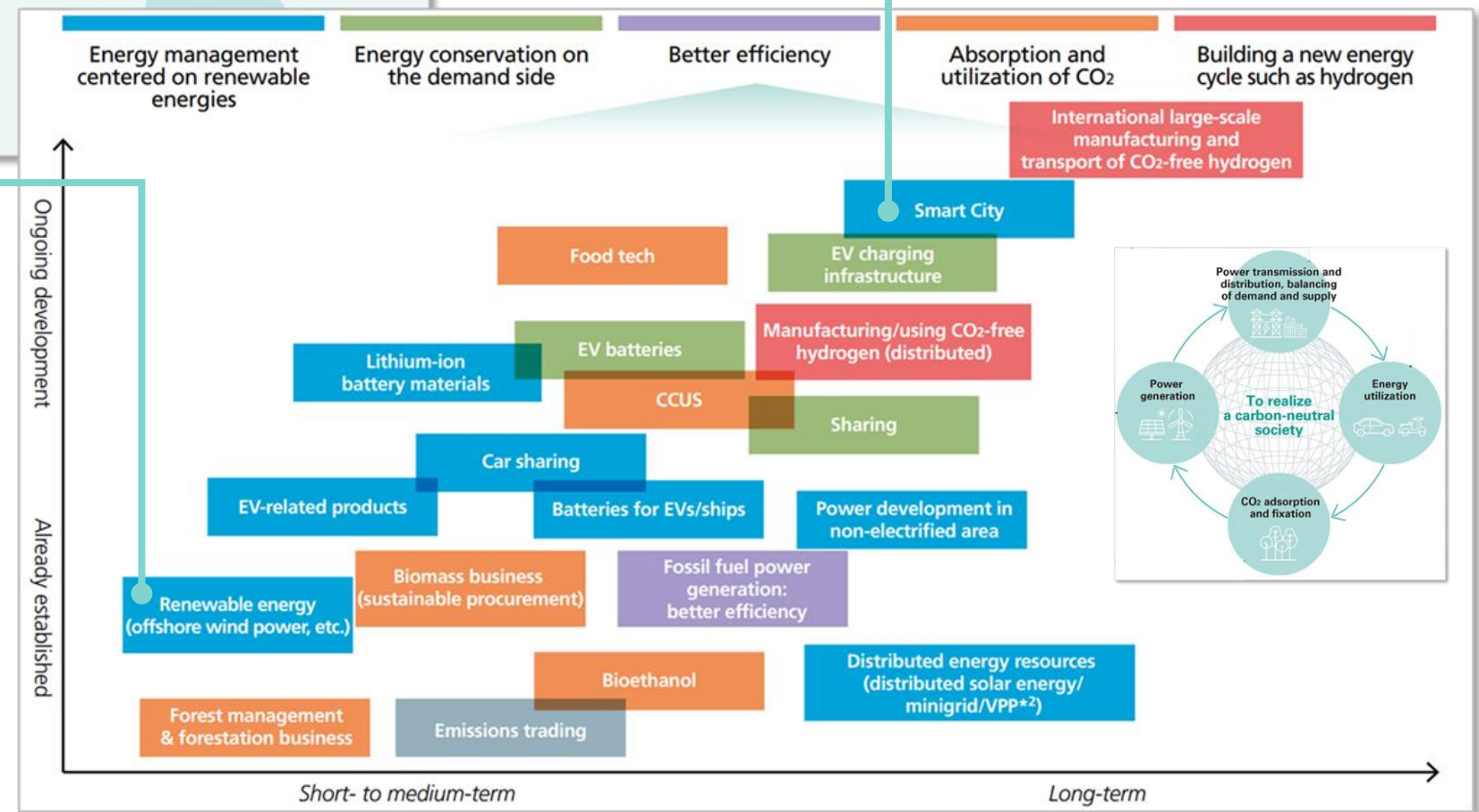
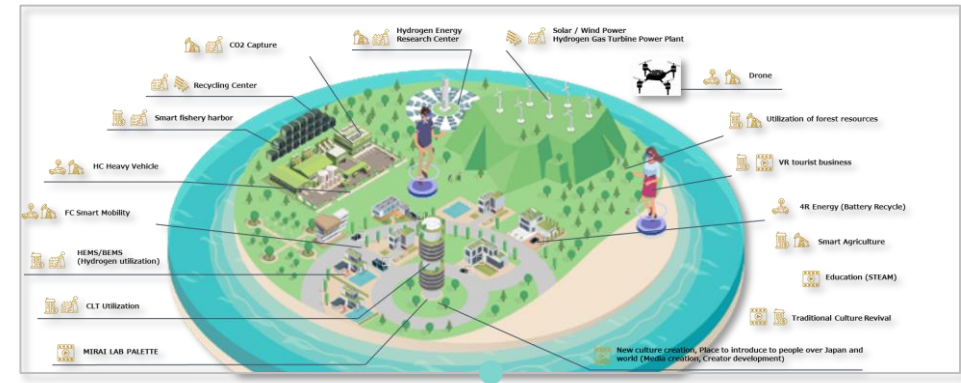
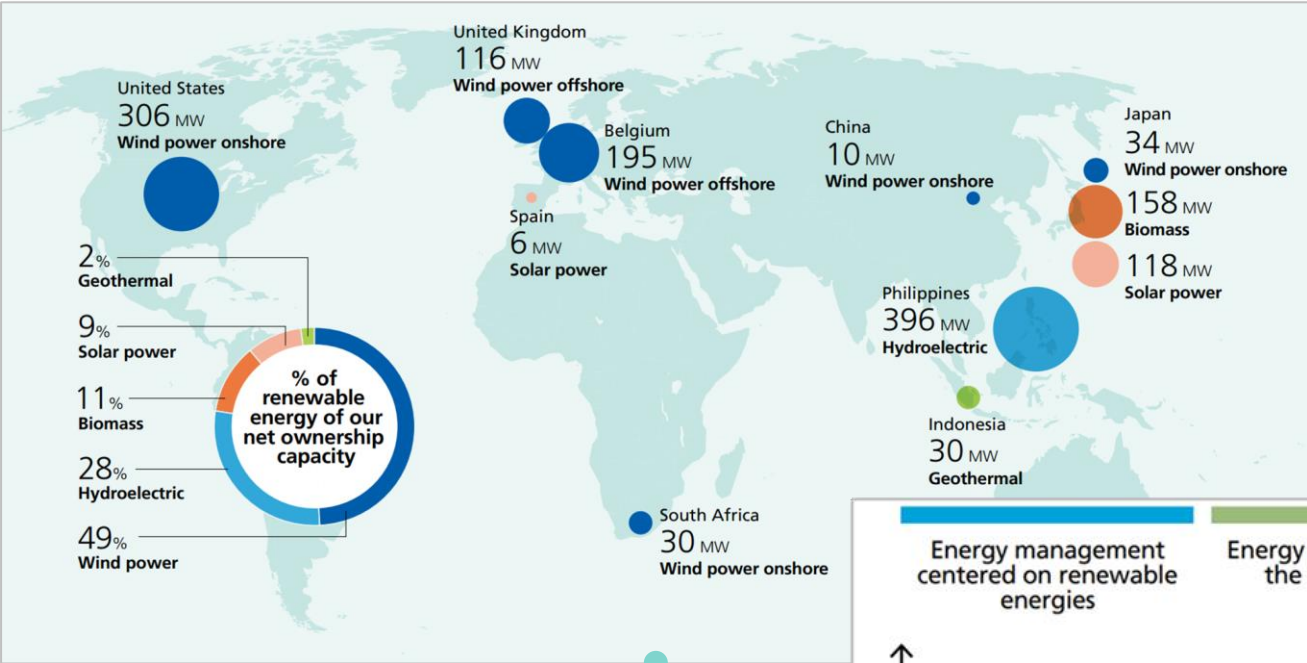




# Creation of next generation businesses







# Sumitomo: example Hydrogen value chain initiatives

## Local production and consumption

- Green H2 production & distribution (e-, hydro)
- Smart City projects | town planning
- Blue H2 production
- Zero carbon mining projects

## Large-scale value chain

- Green H2 & Ammonia (pv | wind)
- Green H2 (hydro)
- H2 import & domestic distribution networks
- Blue H2 (lignite | gasification)

## New technologies | IP | start-up

- Venture capital (H2 specialisation)
- H2 electrolyser technologies (IP | manufacture | distribution)
- H2 photocatalytic chemicals

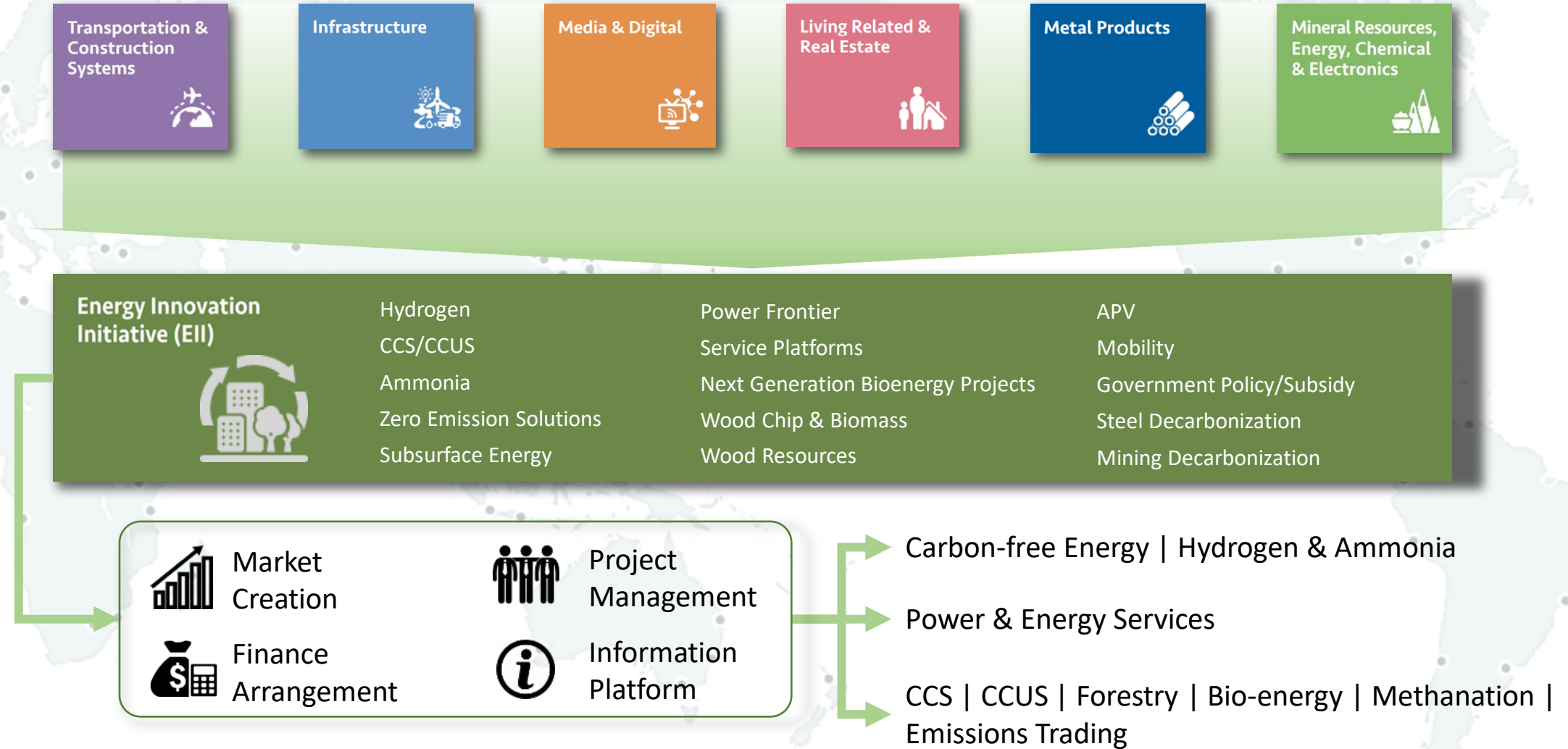
## Hydrogen Council





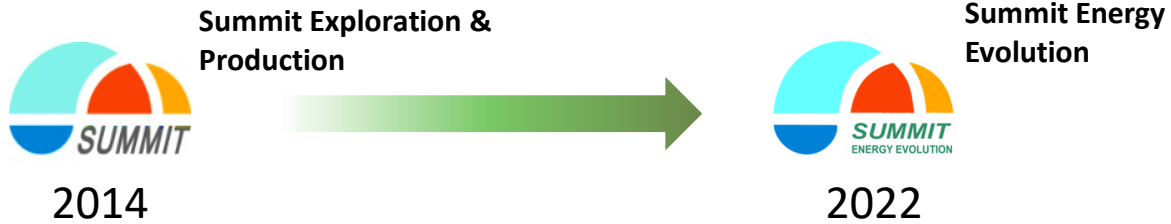


# ENERGY INNOVATION INITIATIVE





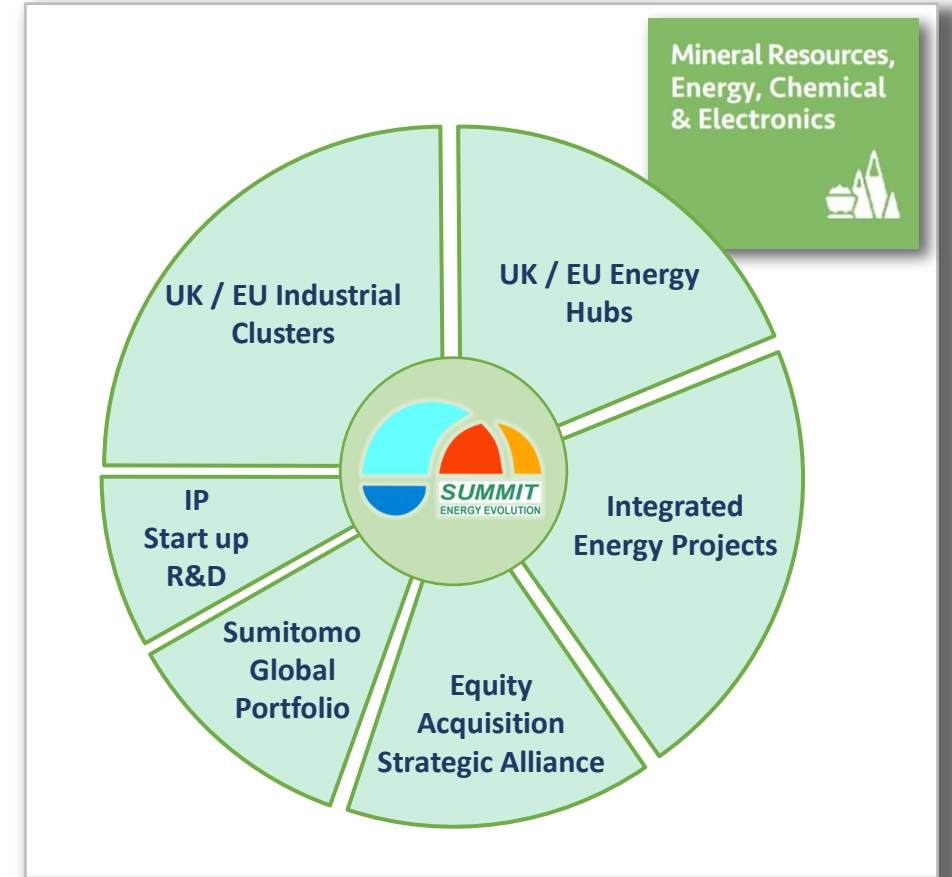
# Summit Energy Evolution



CCS | CCUS  
Hydrogen Production  
Hydrogen Storage  
Geothermal  
Ammonia

Development  
Investment | Partner  
Finance  
Project Management  
(Operator)

- New UK-based wholly owned subsidiary of Sumitomo Corporation
- Focussed on full value chain decarbonisation projects & low carbon / net zero carbon initiatives
- Targeting greenfield & brownfield / re-purposing
- Particular focus on re-purposing of oil & gas facilities / infrastructure
- Close collaboration with global Sumitomo Corporation



**Sumitomo Corporation Europe Limited**







Supply Chain and Technology



Regulatory



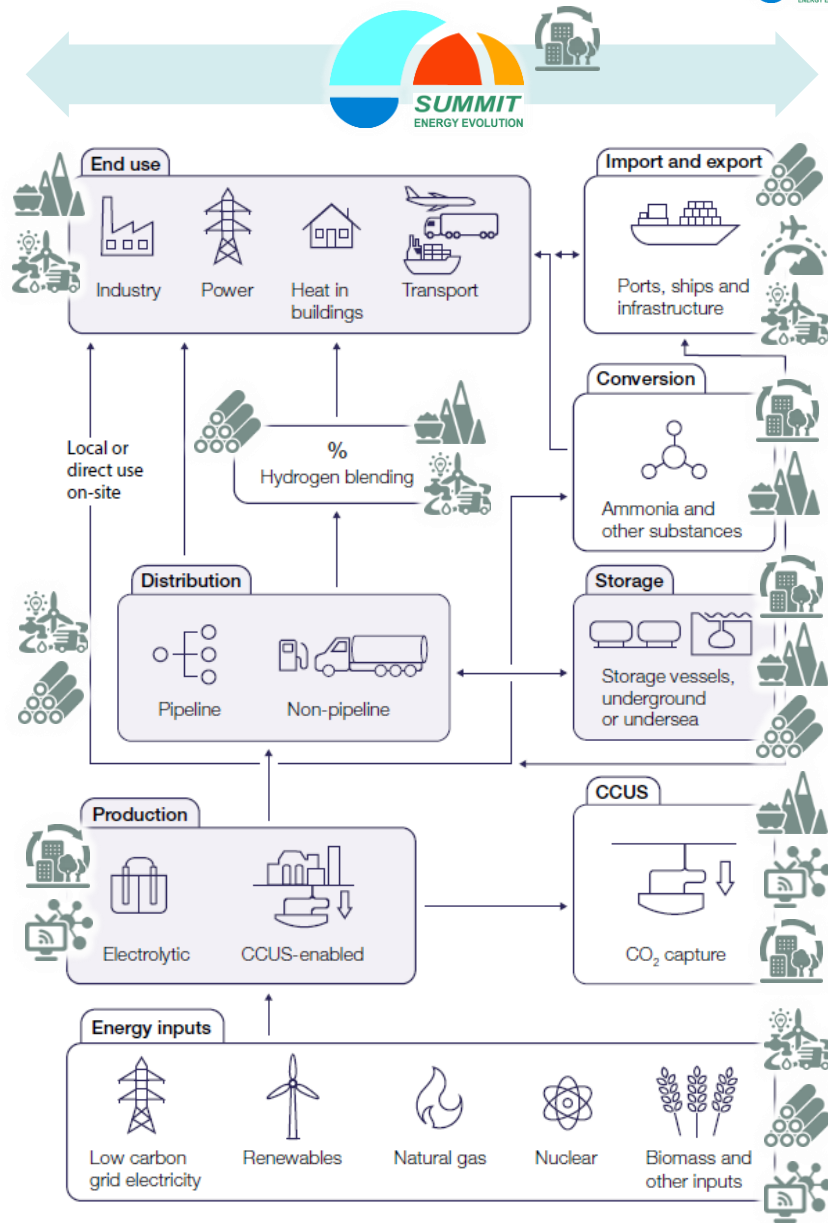
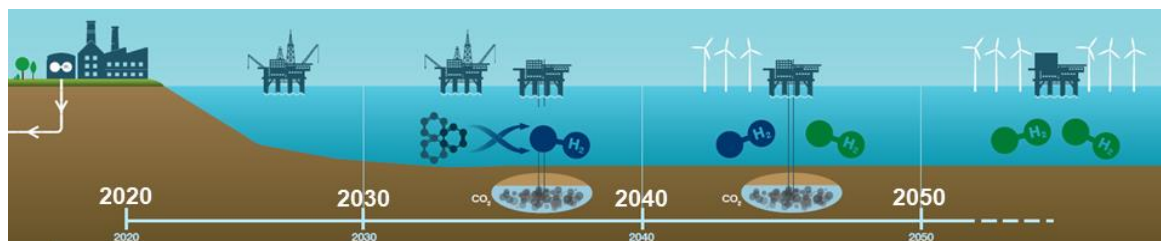
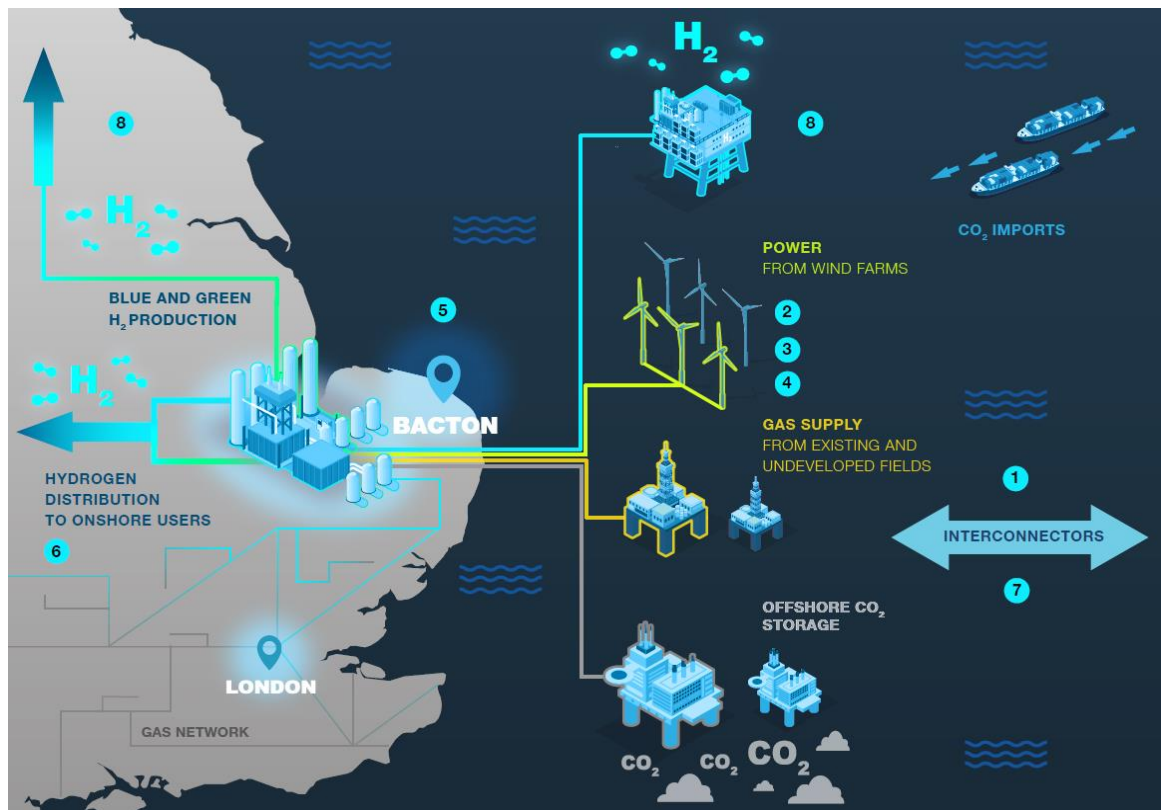
Hydrogen demand



Hydrogen supply



Infrastructure



# Thank You

